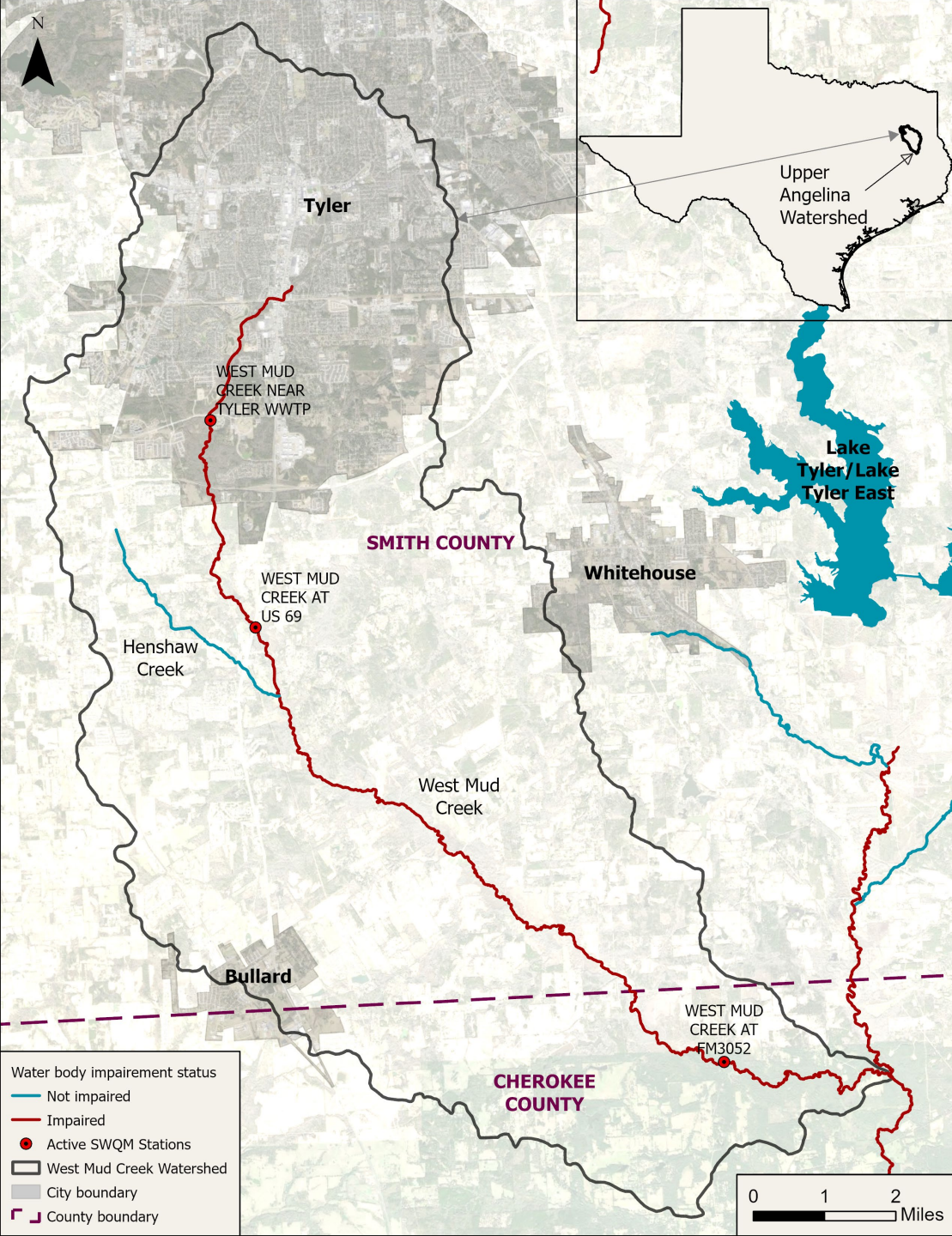


Ayish Bayou & West Mud Creek

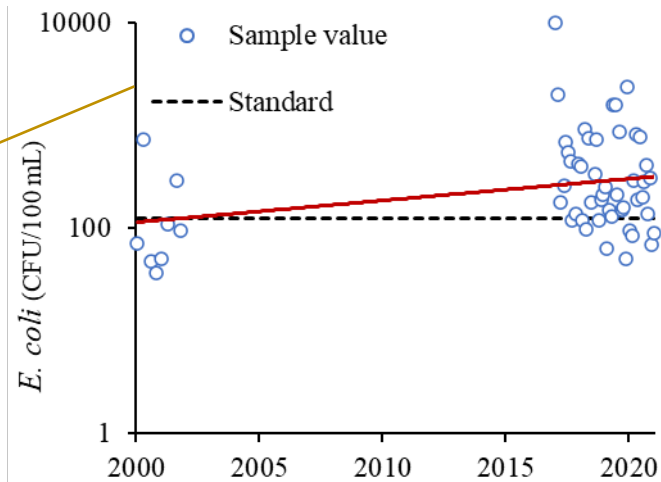
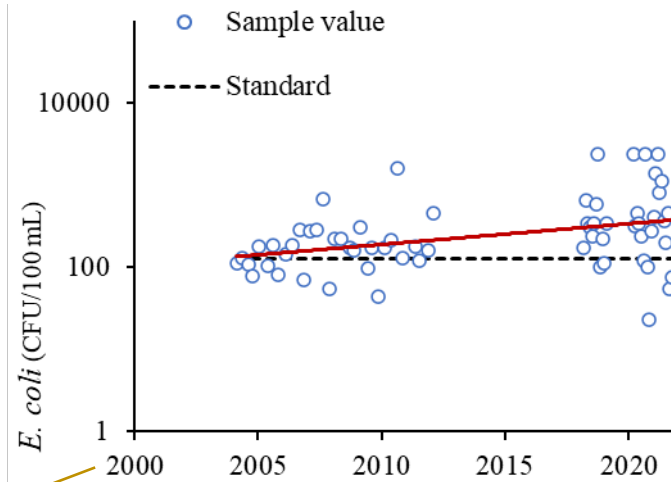
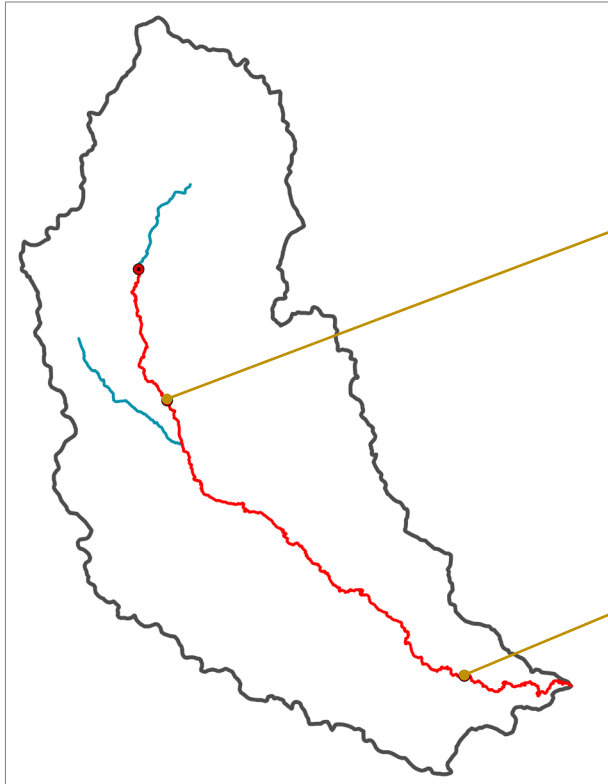




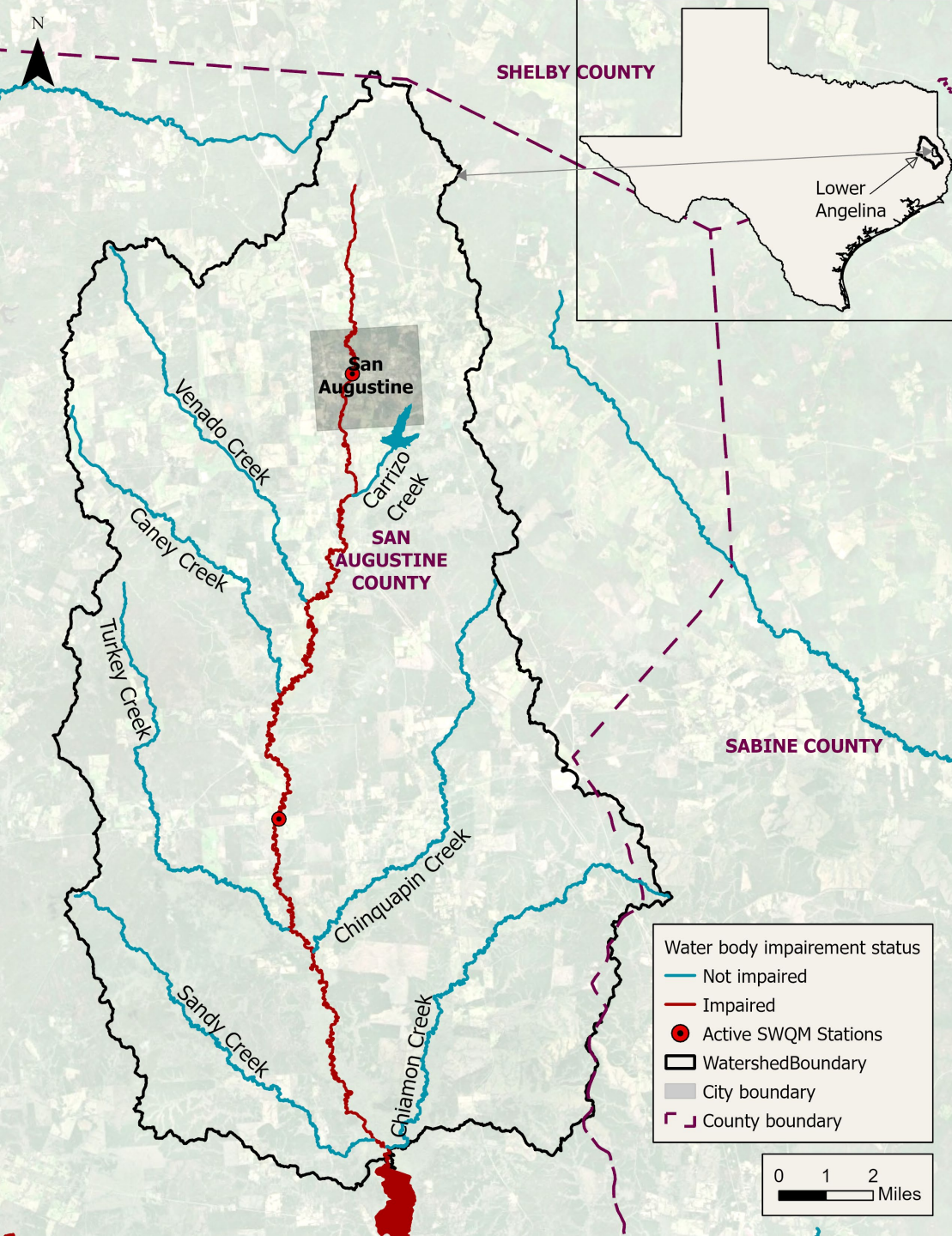
West Mud Creek

- 23 mi, a trib. of Mud Ck, trib. of the Angelina River.
- 93 mi², in Smith and Cherokee Counties
 - Cities of Tyler, Bullard & Whitehouse.

West Mud Creek – Water Quality



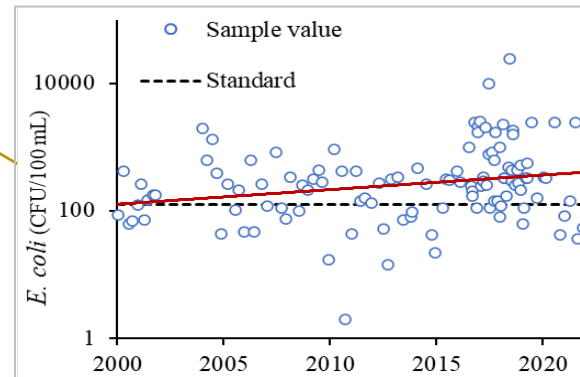
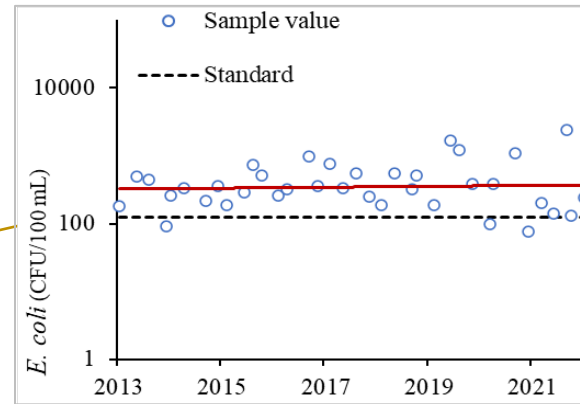
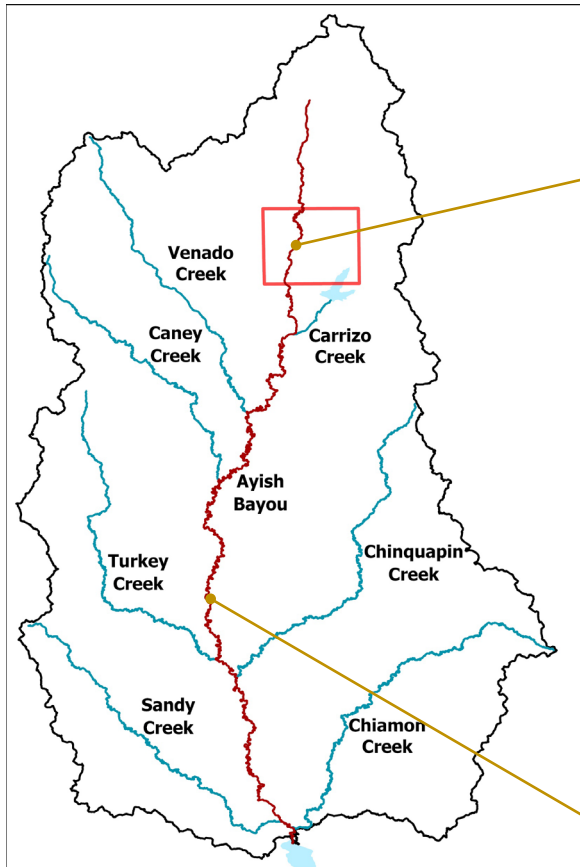
- Elevated fecal indicator bacteria levels in the downstream AU
- Potential sources of pollutants in the watershed:
 - wastewater treatment facilities
 - leaking sewer lines, sewer overflows
 - pet wastes
 - failing septic system
 - wildlife
 - feral hogs
 - illicit and illegal dumping



Ayish Bayou

- 32 mi, flowing into the Sam Rayburn Reservoir
- 192 mi², 99% in San Augustine County
- Largely rural - forests cover about 56%

Ayish Bayou – Water Quality



- Elevated fecal indicator bacteria levels
- Potential sources of pollutants in the watershed:
 - failing septic systems
 - wildlife
 - feral hogs
 - Livestock
 - illicit and illegal dumping

Ayish Bayou & West Mud Creek Project

- Funded by the Texas Commission on Environmental Quality
- Started in Apr 2024

Ayish Bayou

- Collecting supplemental water quality and streamflow data
- Conducting flow estimation
- Developing water quality data summary and flow estimation reports
- Engaging local stakeholders

West Mud Creek

- Developing a Technical Support Document with Total Maximum Daily Load allocations to address a bacteria impairment
- Engaging local stakeholders

Thank you – Questions?

Project Websites:

<https://ayish.twri.tamu.edu/>

<https://ayish.twri.tamu.edu/west-mud-creek/>

Contact

Luna Yang

luna.yang@ag.tamu.edu

Dr. Lucas Gregory

lucas.gregory@ag.tamu.edu

Michael Schramm

michael.schramm@ag.tamu.edu

Dr. Duncan Kikoyo

duncan.ahimbisibwe@ag.tamu.edu